



V&G

165CW

**VALMOND
& GIBSON**

165mm Unitised Curtain Wall

Designed & extruded in Australia



25 Catalina Drive, Canberra, ACT

**VALMOND
& GIBSON**

**Specialists in
compliant, durable
and functional
façades**

valmondgibson.com



Reduced Project Risk

Australian made & local
supply chain increases speed



Energy Efficiency

V&G exclusive design exceeds
national efficiency standards



Faster & Easier Installation

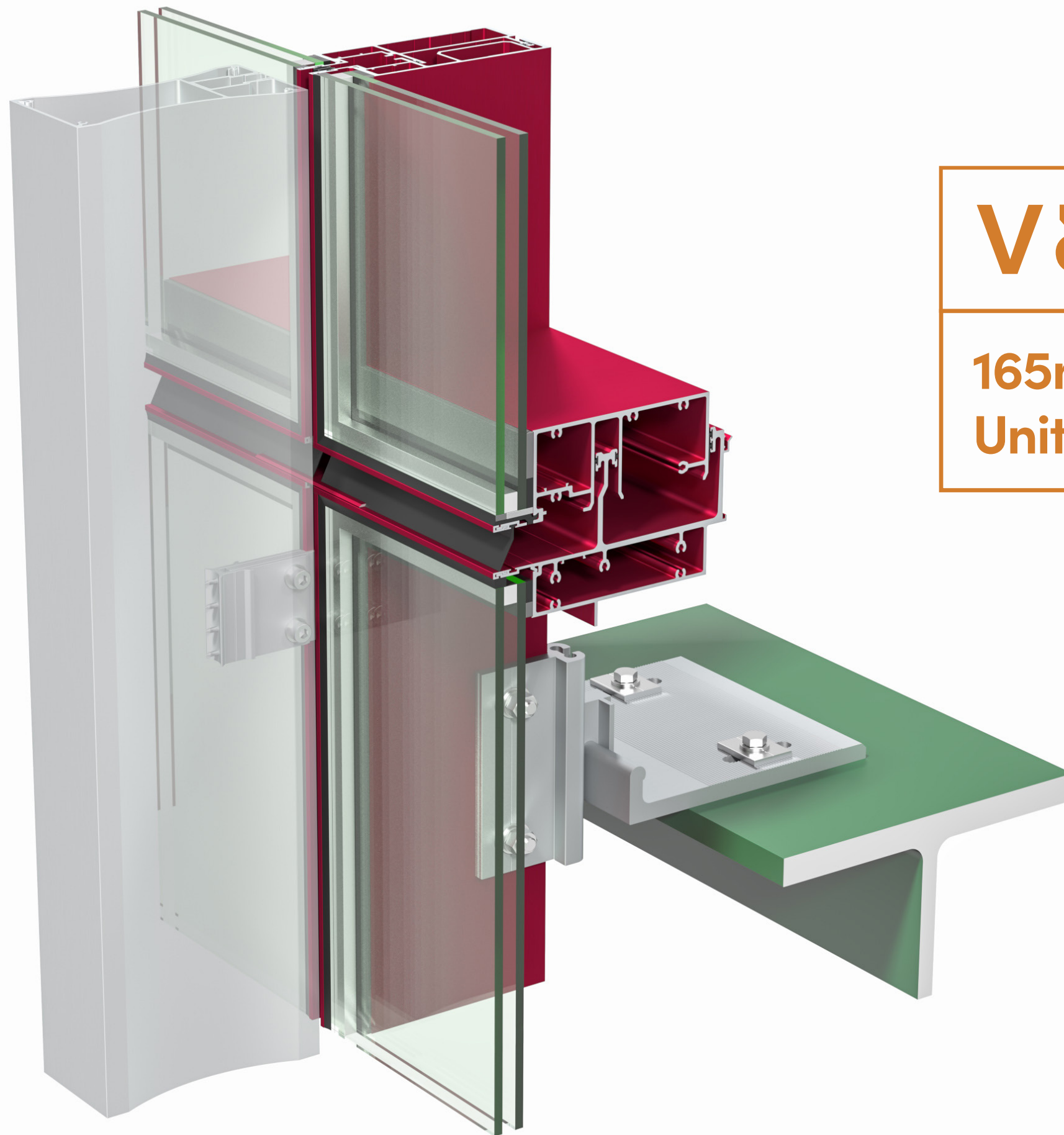
Innovative total system integration
with built-in feature options



Performance Confidence

NATA accredited testing

Introducing V&G165CW Curtain Wall



V&G 165CW

165mm Structurally Glazed
Unitised Curtain Wall

V&G 165CW

Reduced Project Risk

Australian made & local supply chain increases speed and reduces project risks.

- ✓ System designed and engineered in Australia
- ✓ Extruded in Australia
- ✓ Tested in Australia
- ✓ Conforming to Australian Standards AS/NZS 1866:1997
- ✓ Local design & project support



Energy Efficiency

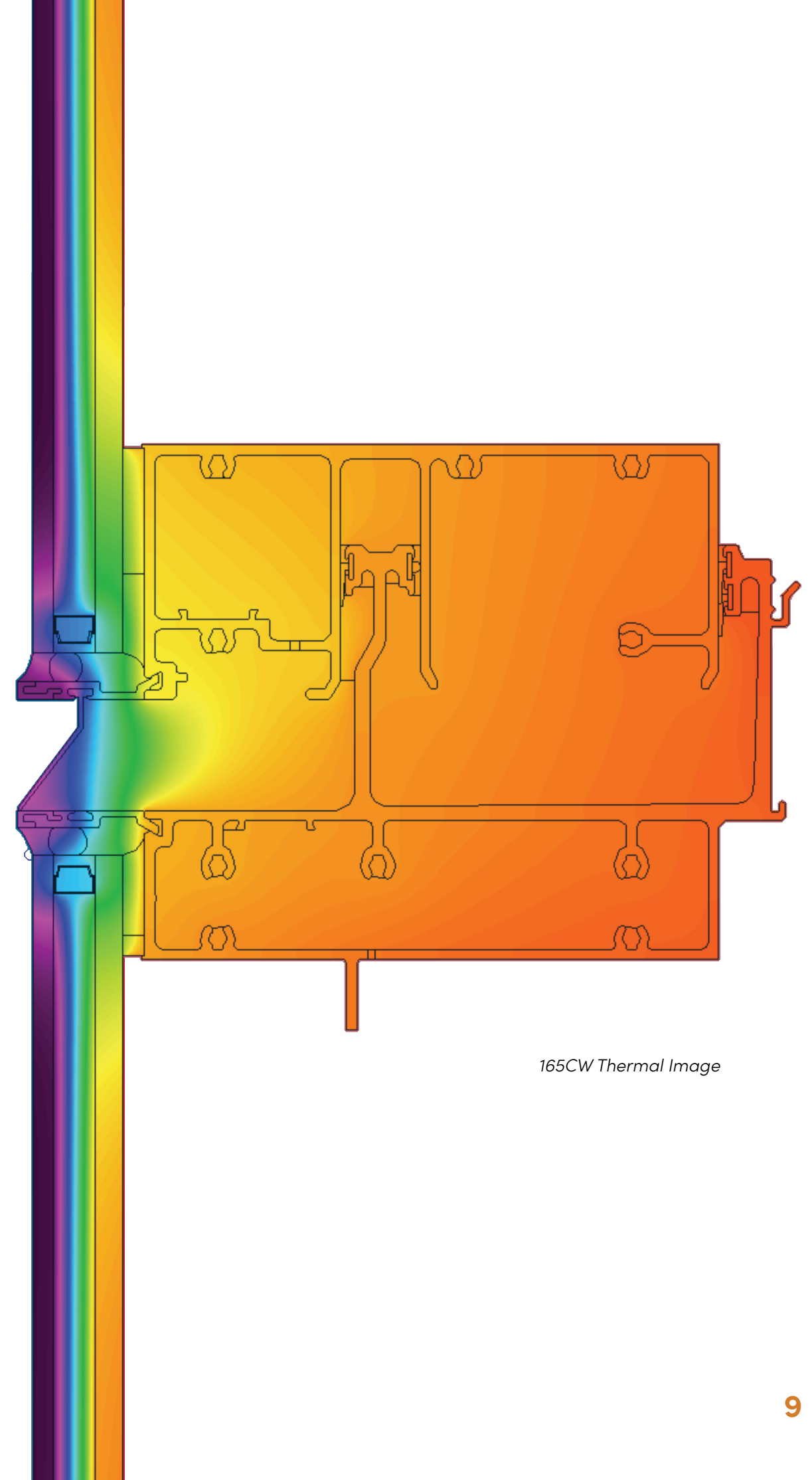
V&G exclusive curtain wall design exceeds national efficiency standards and Section J requirements.

Thermally Broken glazing adaptors:

- ✓ World leading polyamide strip supplier
- ✓ Aluminium nose cap
- ✓ Various glass thickness capacity

Sunshades:

- ✓ Engineered connection
- ✓ Low thermal conductivity
- ✓ Multiple bracket options
- ✓ Horizontal and vertical fin connection solutions
- ✓ Stack joint and transom bracket connection options
- ✓ No air-seal penetration
- ✓ Concealed fixings with integrated nut plate
- ✓ Weather tested bracket connection
- ✓ Custom designs



165CW Thermal Image

V&G 165CW

Faster & Easier Installation

**Innovative total system integration
with built-in feature options**

Framing system:

- ✓ Engineered design
- ✓ 165mm internal frame depth
- ✓ Multiple framing options
- ✓ ± 25 mm stack joint movement
- ✓ Removeable nose glazing adaptors
- ✓ Integrated sunshade bracket receiver

Internal Options:

- ✓ Integrated Architectural skirtings
- ✓ Blind pelmet options
- ✓ Discreet connections

Hook-on bracket system:

- ✓ 3-dimensional adjustment
- ✓ Floor bracket options
- ✓ Engineered and tested

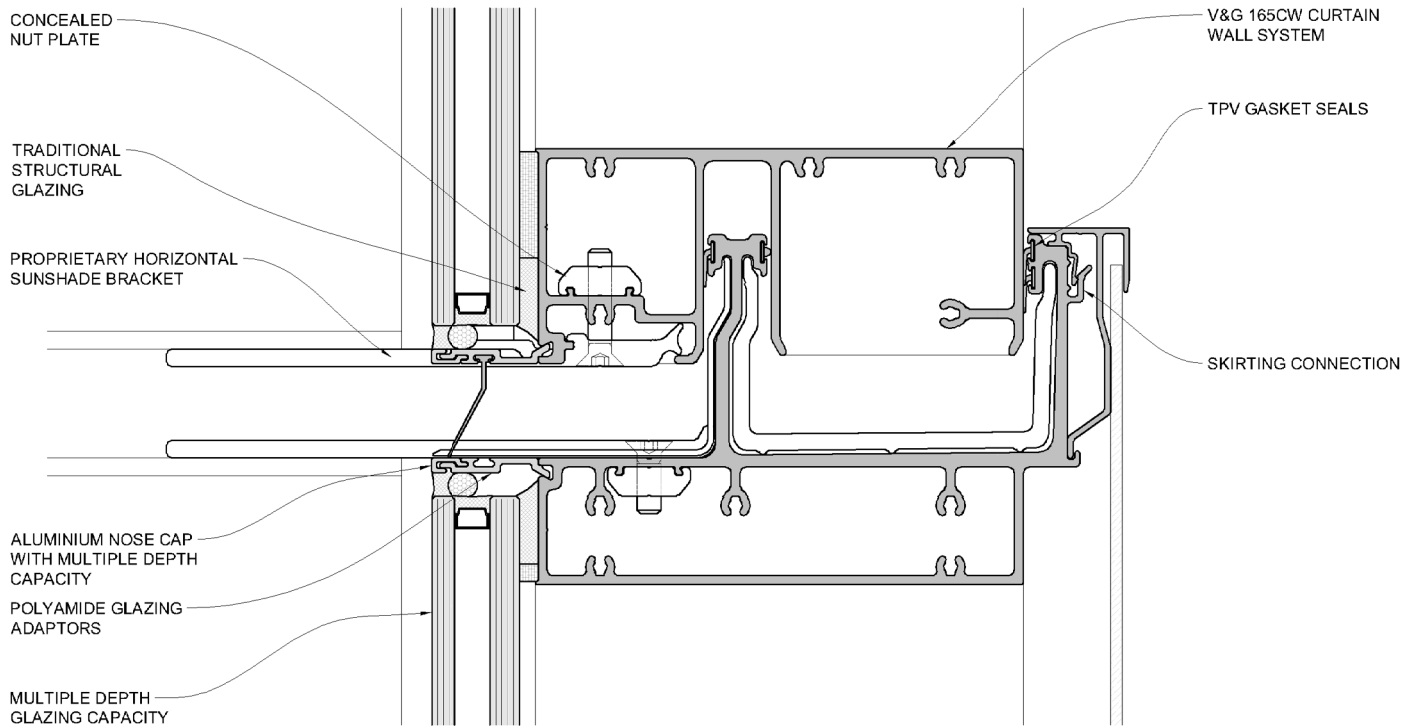
Curved panel capability:

- ✓ World leading curving facility partner
- ✓ Tested solution

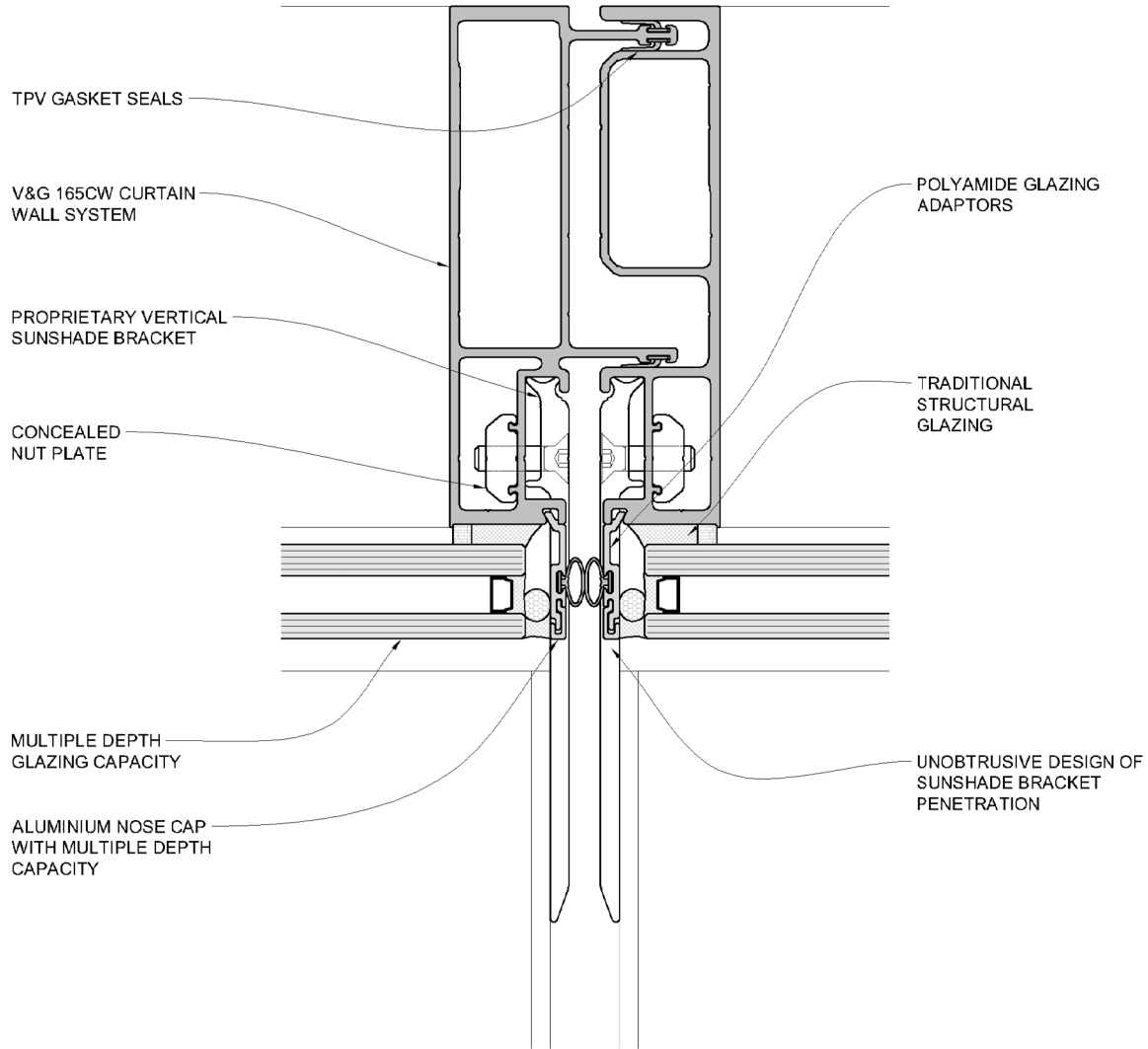


Integrated feature system

V&G 165CW



Typical Detail of Horizontal Stack Joint



Typical Detail of Vertical Mullion

V&G 165CW

Performance Confidence

NATA accredited testing

AS/NZS 4284:2008 tested:

- ✓ Tested in Australia
- ✓ Custom built test rig
- ✓ Testing equipment supplied, calibrated and commissioned by a NATA accredited laboratory



System Portfolio

6 Brindabella Circuit
Canberra, ACT

25 Catalina Drive
Canberra, ACT

Deakin One
Canberra, ACT

Murdoch University
Perth, WA

Queanbeyan Civic & Cultural Precinct (QCCP)
Queanbeyan, NSW

Tweed Valley Hospital
Kingscliff, NSW

Sandstone Precinct
Sydney, NSW

Land 400 School of Armour
Puckapunyal Military Area, VIC

6 Brindabella Circuit, Canberra ACT



Sandstone Precinct, Sydney NSW

V&G 165CW

**VALMOND
& GIBSON**

**Questions? Contact us today to add
speed and confidence to your project.**

V&G offers industry-leading 1:1 support on
all projects and free advice on specs and
suitability for your project.

valmondgibson.com

sales@valmondgibson.com

1300 097 999



V&G 165CW

**VALMOND
& GIBSON**